



### **SHOWGROUND**

Telford Riding Club,  
Berriewood Farm,  
Conover, Shrewsbury, Shropshire  
SY5 7NN

## **SHOW DATES 2021**

SEPTEMBER 26TH - Open Show (**SASH SHOW**)

OCTOBER 17TH -Open Show

2022 season Membership Early Bird offer  
Ask a member of staff for more information

**All of our events are open  
to Members and non Members**

**Show Jumping  
Dressage  
Ridden showing  
In Hand  
Lead Rein**

### **Contact Details**

Email: [telford.ridingclub@hotmail.com](mailto:telford.ridingclub@hotmail.com)  
Website: [www.telfordridingclub.com](http://www.telfordridingclub.com)



### **SHOWGROUND**

Telford Riding Club,  
Berriewood Farm,  
Conover, Shrewsbury, Shropshire  
SY5 7NN

## **SHOW DATES 2021**

SEPTEMBER 26TH - Open Show (**SASH SHOW**)

OCTOBER 17TH -Open Show

2022 season Membership Early Bird offer  
Ask a member of staff for more information

**All of our events are open  
to Members and non Members**

**Show Jumping  
Dressage  
Ridden showing  
In Hand  
Lead Rein**

### **Contact Details**

Email: [telford.ridingclub@hotmail.com](mailto:telford.ridingclub@hotmail.com)  
Website: [www.telfordridingclub.com](http://www.telfordridingclub.com)



**Christine Morgan**  
Freelance Instructor

**Mobile: 07453751176**



UKCCL2, BHSI Qualified  
Over 25 years in the Equestrian industry  
Enhanced DBS  
Safeguarding certified  
Fully Insured

Dressage, Show Jumping ,X-Country  
All Levels catered for

Find me on Facebook

[www.facebook.com/freelance.instructor](http://www.facebook.com/freelance.instructor)



**Christine Morgan**  
Freelance Instructor

**Mobile: 07453751176**



UKCCL2, BHSI Qualified  
Over 25 years in the Equestrian industry  
Enhanced DBS  
Safeguarding certified  
Fully Insured

Dressage, Show Jumping ,X-Country  
All Levels catered for

Find me on Facebook

[www.facebook.com/freelance.instructor](http://www.facebook.com/freelance.instructor)



**07779002274**

Contractors,  
Contract Farming Available  
Quadrant Hay & Straw  
Available

Call for further details



**07779002274**

Contractors,  
Contract Farming Available  
Quadrant Hay & Straw  
Available

Call for further details

# Telford Riding Club Schedule

Members £7 Non Members £ 9 First Aid Included

## Show Jumping classes

### Ring 1 Show Jumping

**START 10.00AM**

Juniors & seniors will jump together and be awarded separately in  
Classes 4, 5, 6, 7, 8, 9 & 10.

There will be No Fillers included in the morning show jumping.

**Class 1 LEAD REIN JUMPING** - (must be on a lead rein)

**Class 2 NURSERY STAKES** - Rider 10 yrs & under not to exceed 1ft (30cm)

**Class 3 DIDI PONY** - Rider 12 yrs & under not to exceed 1ft3 (40cm)

**Class 4 VERY NOVICE SHOW JUMPING** not to exceed 1ft6 (50cm)

**Class 5 NOVICE SHOW JUMPING** not to exceed 2ft (60cm)

**Class 6 MINIMUS SHOW JUMPING** not to exceed 2ft3 (70cm)

Clear round Show jumping £3.00 per entry

### **AFTERNOON CLASSES TO START NO EARLIER THAN 1.30PM**

**Class 7 INTERMEDIATE SHOW JUMPING** -not to exceed 2ft3 (70cm)

**Class 8 SMALL OPEN SHOW JUMPING** - not to exceed 2ft7 (80cm)

**Class 9 OPEN SHOWJUMPING** - not to exceed 3ft (90cm)

**Class 10 DISCOVERY SHOW JUMPING** - not to exceed 1m (100cm)

**ALL Show jumping classes will be single phase**

**All show jumping will be on an all weather surface**

# Telford Riding Club Schedule

Members £7 Non Members £ 9 First Aid Included

## Show Jumping classes

### Ring 1 Show Jumping

**START 10.00AM**

Juniors & seniors will jump together and be awarded separately in  
Classes 4, 5, 6, 7, 8, 9 & 10.

There will be No Fillers included in the morning show jumping.

**Class 1 LEAD REIN JUMPING** - (must be on a lead rein)

**Class 2 NURSERY STAKES** - Rider 10 yrs & under not to exceed 1ft (30cm)

**Class 3 DIDI PONY** - Rider 12 yrs & under not to exceed 1ft3 (40cm)

**Class 4 VERY NOVICE SHOW JUMPING** not to exceed 1ft6 (50cm)

**Class 5 NOVICE SHOW JUMPING** not to exceed 2ft (60cm)

**Class 6 MINIMUS SHOW JUMPING** not to exceed 2ft3 (70cm)

Clear round Show jumping £3.00 per entry

### **AFTERNOON CLASSES TO START NO EARLIER THAN 1.30PM**

**Class 7 INTERMEDIATE SHOW JUMPING** -not to exceed 2ft3 (70cm)

**Class 8 SMALL OPEN SHOW JUMPING** - not to exceed 2ft7 (80cm)

**Class 9 OPEN SHOWJUMPING** - not to exceed 3ft (90cm)

**Class 10 DISCOVERY SHOW JUMPING** - not to exceed 1m (100cm)

**ALL Show jumping classes will be single phase**

**All show jumping will be on an all weather surface**

## Lead Rein classes

### **RING 2 - LEAD REIN**

**START 10.00AM**

- Class 11 BEST TURNED OUT** - (rider 8 yrs & under)
- Class 12 BEST TURNED OUT M&M-** (rider 8 yrs & under)
- Class 13 BEST RIDER-** (rider 8 yrs & under)
- Class 14 BEST SHOW PONY-** (rider 8 yrs & under)
- Class 15 BEST M&M PONY** - (8 yrs & under)

#### Off lead Rein

- Class 16 FIRST RIDDEN-** (rider 10 yrs & under)
- Class 17 RIDDEN M&M-** (rider 12yrs & under)
- Class 18 YOUNG HANDLER-** (rider 12 yrs & under)

LEAD REIN CHAMPIONSHIP 1ST AND 2ND PLACE COMPETITORS FROM  
CLASSES 11, 12, 13, 14, 15, 16 , 17 & 18 ARE ELIGIBLE.

**A CHAMPION AND RESERVE CHAMPION  
WILL BE AWARDED ROSETTES**

## In Hand classes

### **RING 2 IN HAND**

**START NO EARLIER THAN 2PM**

- Class 19 IN HAND PONY** - Any age not to exceed 14.2hh at maturity
- Class 20 IN HAND HORSE-** Any age must be 14.3hh at maturity
- Class 21 IN HAND YOUNGSTOCK-** foal to 3 years, any height, any breed
- Class 22 IN HAND VETERAN** - 15 years or over
- Class 23 IN HAND M&M–** shown in natural state pure breed only
- Class 24 IN HAND COB TYPE** – any height any age excluding M&M
- Class 25 IN HAND COLOURED** – any age any height

IN HAND CHAMPIONSHIP 1ST AND 2ND PLACE COMPETITORS FROM  
CLASSES 19, 20, 21, 22, 23, 24 & 25 ARE ELIGIBLE.

**A CHAMPION AND RESERVE CHAMPION  
WILL BE AWARDED ROSETTES**

## Lead Rein classes

### **RING 2 - LEAD REIN**

**START 10.00AM**

- Class 11 BEST TURNED OUT** - (rider 8 yrs & under)
- Class 12 BEST TURNED OUT M&M-** (rider 8 yrs & under)
- Class 13 BEST RIDER-** (rider 8 yrs & under)
- Class 14 BEST SHOW PONY-** (rider 8 yrs & under)
- Class 15 BEST M&M PONY** - (8 yrs & under)

#### Off lead Rein

- Class 16 FIRST RIDDEN-** (rider 10 yrs & under)
- Class 17 RIDDEN M&M-** (rider 12yrs & under)
- Class 18 YOUNG HANDLER-** (rider 12 yrs & under)

LEAD REIN CHAMPIONSHIP 1ST AND 2ND PLACE COMPETITORS FROM  
CLASSES 11, 12, 13, 14, 15, 16 , 17 & 18 ARE ELIGIBLE.

**A CHAMPION AND RESERVE CHAMPION  
WILL BE AWARDED ROSETTES**

## In Hand classes

### **RING 2 IN HAND**

**START NO EARLIER THAN 2PM**

- Class 19 IN HAND PONY** - Any age not to exceed 14.2hh at maturity
- Class 20 IN HAND HORSE-** Any age must be 14.3hh at maturity
- Class 21 IN HAND YOUNGSTOCK-** foal to 3 years, any height, any breed
- Class 22 IN HAND VETERAN** - 15 years or over
- Class 23 IN HAND M&M–** shown in natural state pure breed only
- Class 24 IN HAND COB TYPE** – any height any age excluding M&M
- Class 25 IN HAND COLOURED** – any age any height

IN HAND CHAMPIONSHIP 1ST AND 2ND PLACE COMPETITORS FROM  
CLASSES 19, 20, 21, 22, 23, 24 & 25 ARE ELIGIBLE.

**A CHAMPION AND RESERVE CHAMPION  
WILL BE AWARDED ROSETTES**

## Ridden Showing Classes

Horse & ponies will show together and be awarded separately  
In classes 28, 29, 30, 32, 34, 36, 37 & 38  
No lead reins with the exception of class 33.

### **RING 3 - RIDDEN SHOWING**

**START 10.00AM**

**Class 26 BEST TURNED OUT**  
**Class 27 BEST TURNED OUT M&M**  
**Class 28 BEST HUNTER HORSE/PONY**  
**Class 29 BEST SHOW HORSE/PONY**  
**Class 30 RIDDEN NOVICE HORSE/PONY**  
**Class 31 BEST RIDDEN M&M**  
**Class 32 BEST RIDDEN COB TYPE**

RIDDEN CHAMPIONSHIP 1ST AND 2ND PLACE COMPETITORS  
FROM CLASSES 26, 27, 28, 29, 30, 31 & 32 ARE ELIGIBLE.  
**A CHAMPION & RESERVE CHAMPION**  
**WILL BE AWARDED ROSETTES**

### **RING 3 - RIDDEN SHOWING**

**START NO EARLIER THAN 2PM**

**Class 33 CONCOURS d'ELEGANCE** - (not fancy dress please ask for details)  
**Class 34 BEST RIDDEN COLOURED** - skewbald, piebald, appaloosa, spotted  
**Class 35 RACE HORSE TO RIDING HORSE** - (subject to eligibility)  
**Class 36 BEST RIDDEN VETERAN** - horse/pony 15 yrs & over  
**Class 37 BEST JUNIOR/SENIOR RIDER** - bases on rider only  
**Class 38 BEST RIDING HORSE/PONY** - any age any height any breed

RIDDEN CHAMPIONSHIP 1ST AND 2ND PLACE COMPETITORS  
FROM CLASSES 33, 34, 35, 36, 37 & 38 ARE ELIGIBLE.  
**A CHAMPION & RESERVE CHAMPION**  
**WILL BE AWARDED ROSETTES**

## Ridden Showing Classes

Horse & ponies will show together and be awarded separately  
In classes 28, 29, 30, 32, 34, 36, 37 & 38  
No lead reins with the exception of class 33.

### **RING 3 - RIDDEN SHOWING**

**START 10.00AM**

**Class 26 BEST TURNED OUT**  
**Class 27 BEST TURNED OUT M&M**  
**Class 28 BEST HUNTER HORSE/PONY**  
**Class 29 BEST SHOW HORSE/PONY**  
**Class 30 RIDDEN NOVICE HORSE/PONY**  
**Class 31 BEST RIDDEN M&M**  
**Class 32 BEST RIDDEN COB TYPE**

RIDDEN CHAMPIONSHIP 1ST AND 2ND PLACE COMPETITORS  
FROM CLASSES 26, 27, 28, 29, 30, 31 & 32 ARE ELIGIBLE.  
**A CHAMPION & RESERVE CHAMPION**  
**WILL BE AWARDED ROSETTES**

### **RING 3 - RIDDEN SHOWING**

**START NO EARLIER THAN 2PM**

**Class 33 CONCOURS d'ELEGANCE** - (not fancy dress please ask for details)  
**Class 34 BEST RIDDEN COLOURED** - skewbald, piebald, appaloosa, spotted  
**Class 35 RACE HORSE TO RIDING HORSE** - (subject to eligibility)  
**Class 36 BEST RIDDEN VETERAN** - horse/pony 15 yrs & over  
**Class 37 BEST JUNIOR/SENIOR RIDER** - bases on rider only  
**Class 38 BEST RIDING HORSE/PONY** - any age any height any breed

RIDDEN CHAMPIONSHIP 1ST AND 2ND PLACE COMPETITORS  
FROM CLASSES 33, 34, 35, 36, 37 & 38 ARE ELIGIBLE.  
**A CHAMPION & RESERVE CHAMPION**  
**WILL BE AWARDED ROSETTES**

## **INDOOR DRESSAGE**

Intro & Prelim Dressage

£9 members £12 Non Members (Pre Entry Only)

Have a go lead rein Intro dressage

£7 members £9 Non Members

### **INTRO DRESSAGE**

**START 10.00AM**

**Class 39 INTRO A OCTOBER**

### **PRELIM DRESSAGE**

**Class 40 PRELIM 19 - OCTOBER**

**ALL OF OUR DRESSAGE CLASSES IS PRE BOOK ONLY**

**PLEASE MESSAGE OUR FACEBOOK PAGE TO BOOK IN**

DRESSAGE TIMES WILL BE PUBLISHED ON OUR FACEBOOK PAGE  
ENTRIES CLOSE THE WEDNESDAY BEFORE OUR SHOW

**ALL DRESSAGE COMPETITORS WILL RECEIVE A ROSETTE.**

## **INDOOR DRESSAGE**

Intro & Prelim Dressage

£9 members £12 Non Members (Pre Entry Only)

Have a go lead rein Intro dressage

£7 members £9 Non Members

### **INTRO DRESSAGE**

**START 10.00AM**

**Class 39 INTRO A OCTOBER**

### **PRELIM DRESSAGE**

**Class 40 PRELIM 19 - OCTOBER**

**ALL OF OUR DRESSAGE CLASSES IS PRE BOOK ONLY**

**PLEASE MESSAGE OUR FACEBOOK PAGE TO BOOK IN**

DRESSAGE TIMES WILL BE PUBLISHED ON OUR FACEBOOK PAGE  
ENTRIES CLOSE THE WEDNESDAY BEFORE OUR SHOW

**ALL DRESSAGE COMPETITORS WILL RECEIVE A ROSETTE.**

# JUST FOR FUN

## RING 2A

£5 Members £7 Non Members

### HANDY EQUINE

1.30PM to 2.30PM

A fun class with a course of obstacles to negotiate in a timed round,  
course varies show to show.

**Class 41 OPEN HANDY EQUINE** Open to all ages, all breeds



1st to 6th Rosettes



Championship Rosettes

# JUST FOR FUN

## RING 2A

£5 Members £7 Non Members

### HANDY EQUINE

1.30PM to 2.30PM

A fun class with a course of obstacles to negotiate in a timed round,  
course varies show to show.

**Class 41 OPEN HANDY EQUINE** Open to all ages, all breeds



1st to 6th Rosettes



Championship Rosettes



Siddle Veterinary Service

[www.svs-vet.co.uk](http://www.svs-vet.co.uk)

Your Independent Equine Vet

**01948 710959**



Siddle Veterinary Service

[www.svs-vet.co.uk](http://www.svs-vet.co.uk)

Your Independent Equine Vet

**01948 710959**

EAT DRINK STAY  
SHROPSHIRE'S FINEST...  
ON YOUR DOORSTEP!



A MODERN  
COACHING INN

SUPPORTING

### TELFORD RIDING CLUB MEMBERS

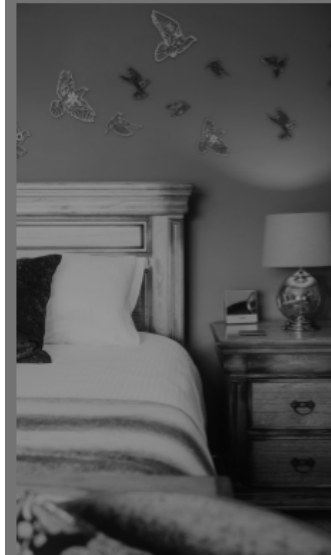
Bring this advertisement with your  
membership card  
and enjoy £5 per person off dinner

**Terms & Conditions**  
Advertisement must be mentioned on booking  
Please advise in advance of any allergens



The Haughmond, Upton Magna, Shrewsbury SY4 4TZ  
01743 709918 [www.thehaughmond.co.uk](http://www.thehaughmond.co.uk)

EAT DRINK STAY  
SHROPSHIRE'S FINEST...  
ON YOUR DOORSTEP!



A MODERN  
COACHING INN

SUPPORTING

### TELFORD RIDING CLUB MEMBERS

Bring this advertisement with your  
membership card  
and enjoy £5 per person off dinner

**Terms & Conditions**  
Advertisement must be mentioned on booking  
Please advise in advance of any allergens



The Haughmond, Upton Magna, Shrewsbury SY4 4TZ  
01743 709918 [www.thehaughmond.co.uk](http://www.thehaughmond.co.uk)

MUDDY PAWS, TIRED HOOVES & WALKING BOOTS  
ALL WELCOME!




  
**THE Village Store**  
 VISIT THE STORE  
 cafe  
 lunch menu  
 weekly food boxes  
 convenience store  
 afternoon teas  
 take away or eat in  
 mounting block  
 cycle stands  
 a great find in Upton Magna!

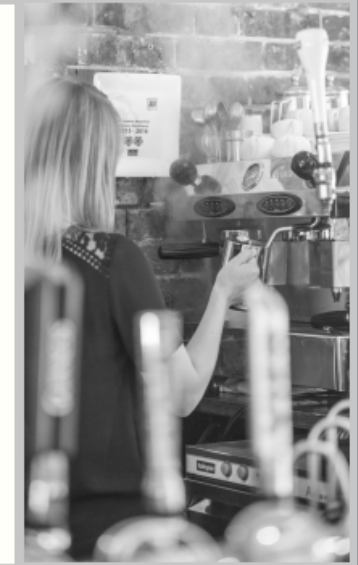


The Haughmond Village Store & Cafe, Upton Magna, Shrewsbury SY4 4TZ  
01743 709164 [www.thehaughmond.co.uk/village-store-cafe](http://www.thehaughmond.co.uk/village-store-cafe)

MUDDY PAWS, TIRED HOOVES & WALKING BOOTS  
ALL WELCOME!



  
**THE Village Store**  
 VISIT THE STORE  
 cafe  
 lunch menu  
 weekly food boxes  
 convenience store  
 afternoon teas  
 take away or eat in  
 mounting block  
 cycle stands  
 a great find in Upton Magna!



The Haughmond Village Store & Cafe, Upton Magna, Shrewsbury SY4 4TZ  
01743 709164 [www.thehaughmond.co.uk/village-store-cafe](http://www.thehaughmond.co.uk/village-store-cafe)

# Equine Embroidery

Local custom embroidered clothing for you & your horses needs.  
We can provide rugs, saddle cloths, jackets, hoodies, gilets & more!  
Or supply bring us your own garments.



[www.shropshiredesigns.co.uk](http://www.shropshiredesigns.co.uk)

FB: shropshire embroidery design

07554810794

# Equine Embroidery

Local custom embroidered clothing for you & your horses needs.  
We can provide rugs, saddle cloths, jackets, hoodies, gilets & more!  
Or supply bring us your own garments.



[www.shropshiredesigns.co.uk](http://www.shropshiredesigns.co.uk)

FB: shropshire embroidery design

07554810794

## **CLUB MEMBERSHIP**

You can join as a Telford Riding Club member at any time throughout the season. Joining us as a member means you will be awarded points for each class you compete in. These points will accumulate over the season & there will be a Champion & Reserve Champion of each class awarded at our presentation evening. A minimum of 50% attendance at our shows must have been achieved for points to count towards the presentation evening.

However points will not be backdated more than two shows from the date of joining.

### **Membership Prices**

**Junior: £15.00 Senior: £20.00 Family: £30.00**

## **POINTS**

Rosettes 1st to 6th places - except where stated.

Points are awarded for all members in each class even if you are not placed.

**1st Place: 15 points 2nd Place: 12 Points 3rd Place: 10 Points  
4th Place: 8 Points 5th Place: 6 Points 6th Place: 4 Points Unplaced: 1 Point**



## **SASH SHOW**

Open to  
members & non members.  
Sashes will be awarded in  
all classes to every  
competitor who places 1st.

## **CLUB MEMBERSHIP**

You can join as a Telford Riding Club member at any time throughout the season. Joining us as a member means you will be awarded points for each class you compete in. These points will accumulate over the season & there will be a Champion & Reserve Champion of each class awarded at our presentation evening. A minimum of 50% attendance at our shows must have been achieved for points to count towards the presentation evening.

However points will not be backdated more than two shows from the date of joining.

### **Membership Prices**

**Junior: £15.00 Senior: £20.00 Family: £30.00**

## **POINTS**

Rosettes 1st to 6th places - except where stated.

Points are awarded for all members in each class even if you are not placed.

**1st Place: 15 points 2nd Place: 12 Points 3rd Place: 10 Points  
4th Place: 8 Points 5th Place: 6 Points 6th Place: 4 Points Unplaced: 1 Point**



## **SASH SHOW**

Open to  
members & non members.  
Sashes will be awarded in  
all classes to every  
competitor who places 1st.

## RULES & REGULATIONS

- Neither Telford Riding Club nor its organisers shall be responsible for any incident pertaining to any animal, person or property throughout the year.
- All rider, handlers and their animals **MUST** have adequate public liability insurance.
- The Judges decision is final.
- Any objections must be made in writing to the secretary & be lodged within 30 minutes of the objection being raised, together with a £20.00 deposit to be forfeited if the objection is overruled.
- Jodhpurs, correct footwear and approved riding hats must be worn with chinstraps fastened at all times whilst mounted.
- The organisers reserve the right to amend the schedule as required, or refuse entry without reason .
- Neither Telford Riding Club nor its organisers shall be responsible for Dogs, They **MUST** be kept on a lead at all times The liability for any damage or accident caused by dogs rests with their owners.
- Riders & Horses ages are taken at the 1st January of the year in which they are competing, no horse under the age of 4 is to be ridden on the showground or in any classes.
- Lorries & trailers must not be mucked out onto the show ground.
- Litter must not be discarded onto the show ground, please use bins provided or take your litter home.
- Any rider that falls from a horse or pony will not be allowed to continue the class or compete again that day until our first aider has given permission.
- **ALL trophies must be returned no later than our September show. Failure to do so will result in competitors being charged for new replacement trophies.**
- Ridden Veteran class: no spurs, no galloping/extended canter in this class.
- Concours d'Elegance class: period dress, not fancy dress, ridden in walk and trot only.
- **Aggressive behaviour towards organisers, staff or competitors will not be tolerated, any such behaviour will result in the individual or individuals being told to leave.**

## RULES & REGULATIONS

- Neither Telford Riding Club nor its organisers shall be responsible for any incident pertaining to any animal, person or property throughout the year.
- All rider, handlers and their animals **MUST** have adequate public liability insurance.
- The Judges decision is final.
- Any objections must be made in writing to the secretary & be lodged within 30 minutes of the objection being raised, together with a £20.00 deposit to be forfeited if the objection is overruled.
- Jodhpurs, correct footwear and approved riding hats must be worn with chinstraps fastened at all times whilst mounted.
- The organisers reserve the right to amend the schedule as required, or refuse entry without reason .
- Neither Telford Riding Club nor its organisers shall be responsible for Dogs, They **MUST** be kept on a lead at all times The liability for any damage or accident caused by dogs rests with their owners.
- Riders & Horses ages are taken at the 1st January of the year in which they are competing, no horse under the age of 4 is to be ridden on the showground or in any classes.
- Lorries & trailers must not be mucked out onto the show ground.
- Litter must not be discarded onto the show ground, please use bins provided or take your litter home.
- Any rider that falls from a horse or pony will not be allowed to continue the class or compete again that day until our first aider has given permission.
- **ALL trophies must be returned no later than our September show. Failure to do so will result in competitors being charged for new replacement trophies.**
- Ridden Veteran class: no spurs, no galloping/extended canter in this class.
- Concours d'Elegance class: period dress, not fancy dress, ridden in walk and trot only.
- **Aggressive behaviour towards organisers, staff or competitors will not be tolerated, any such behaviour will result in the individual or individuals being told to leave.**



**01948 710959**

Badminton Grassroots XC fences  
for all year round schooling

All weather arena, dressage  
arena & grass showjumping  
arena hire

4\* Gold Award Holiday Cottage

Online booking available at  
[www.ses-equine.co.uk](http://www.ses-equine.co.uk)



**01948 710959**

Badminton Grassroots XC fences  
for all year round schooling

All weather arena, dressage  
arena & grass showjumping  
arena hire

4\* Gold Award Holiday Cottage

Online booking available at  
[www.ses-equine.co.uk](http://www.ses-equine.co.uk)

